



RESC.Info Insight

Residential fire risk calculation based on open data with spatial components.

Nicky van Oorschot •  NETAGE.NL



@nickyvoorschot • #SharePSI





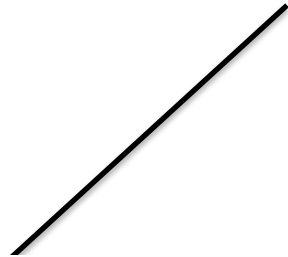




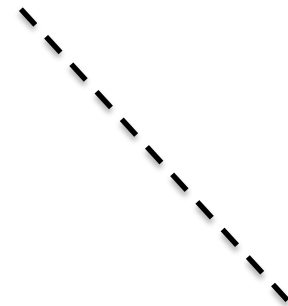




 RESC.INFO INSIGHT



 NETAGE



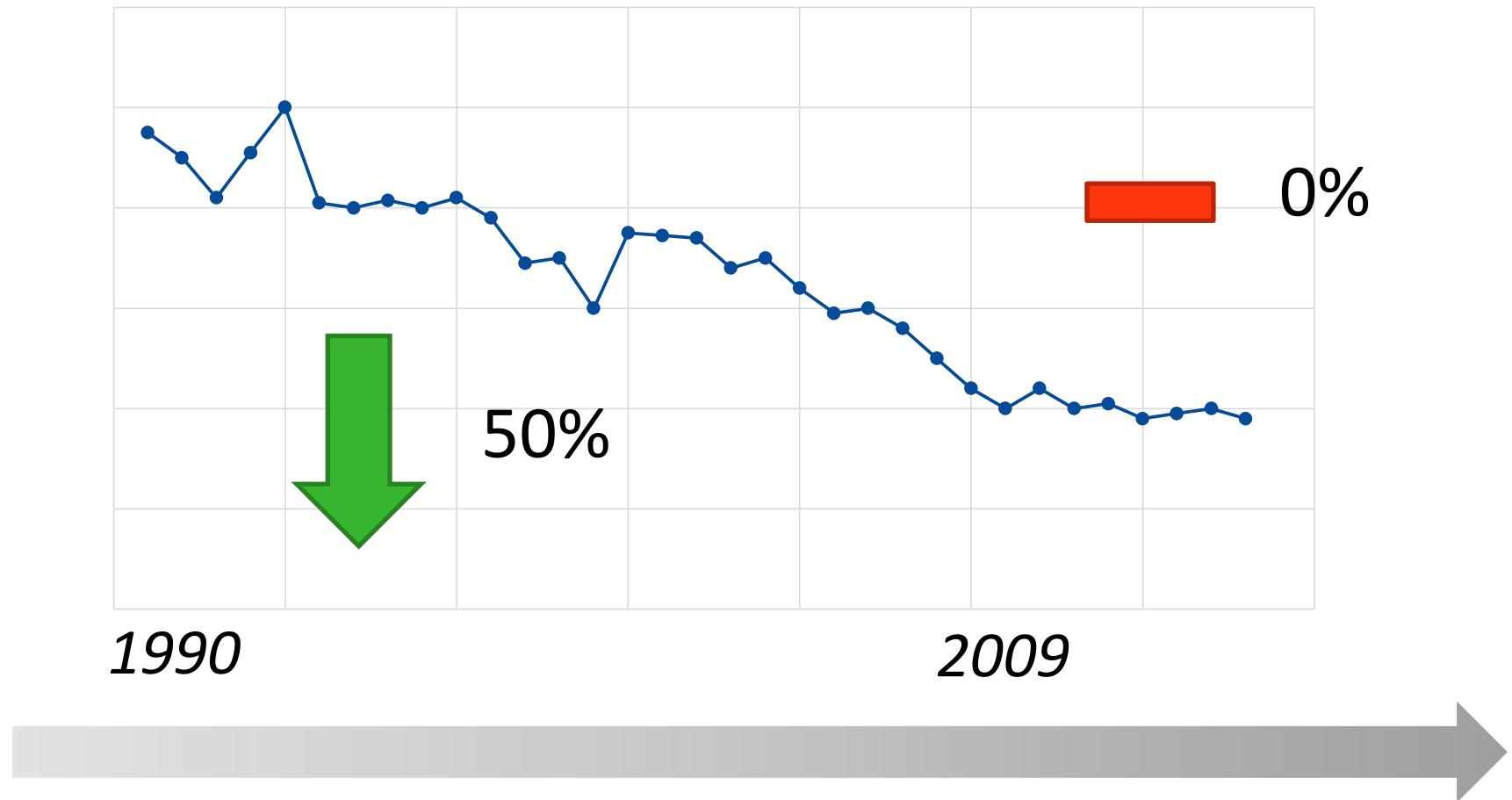
 Open Data
Incubator
Europe



The background of the slide is a solid blue color. Overlaid on this background are several concentric white circles. The circles are centered on the slide and increase in radius from the center outwards, creating a series of nested rings. The text is positioned in the center of the innermost circle.

**Why is this
important?**

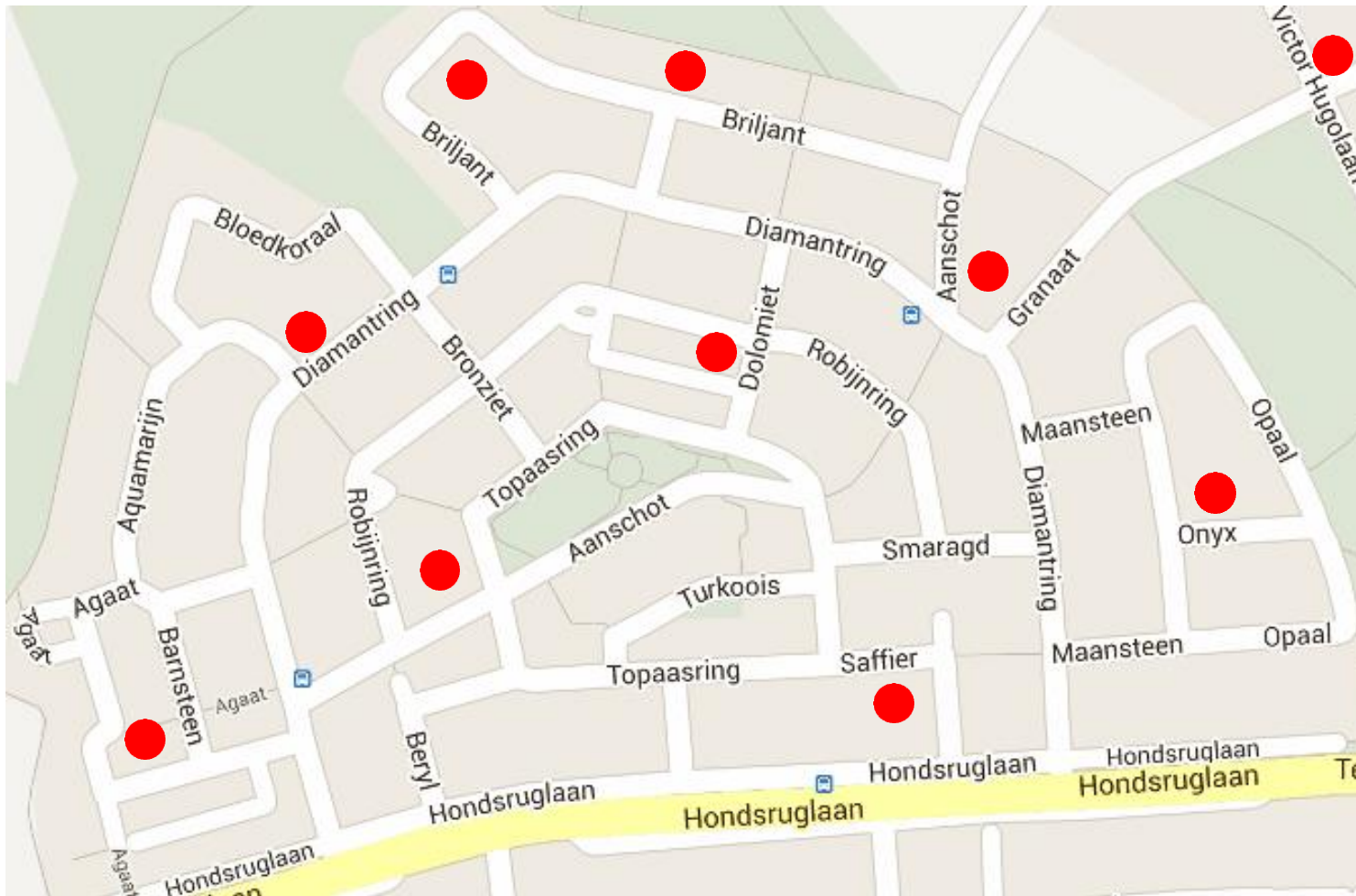
Statistics



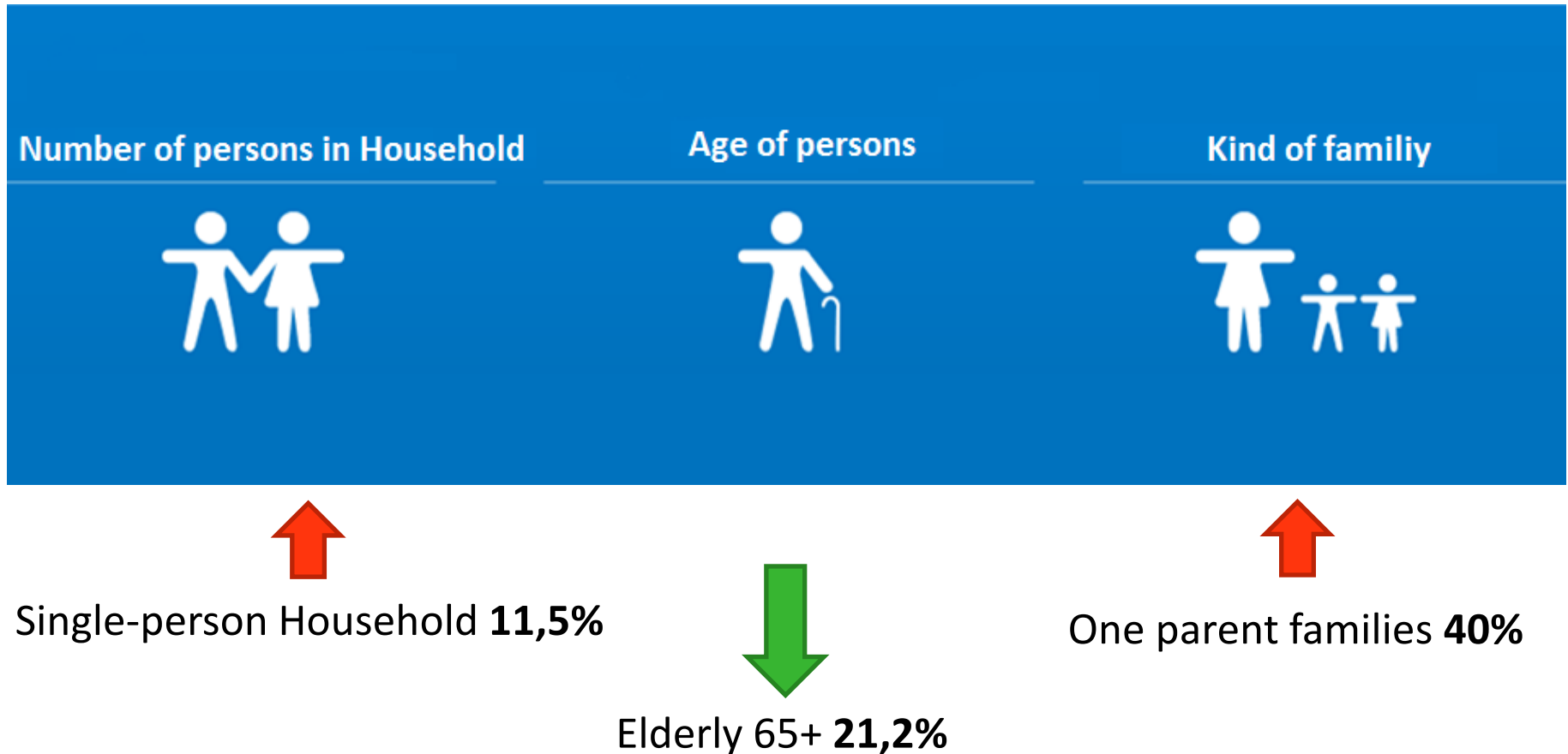
The background of the slide features a series of concentric white circles on a solid blue background, creating a target-like or ripple effect. The circles are centered around the text.

Calculating fire risks

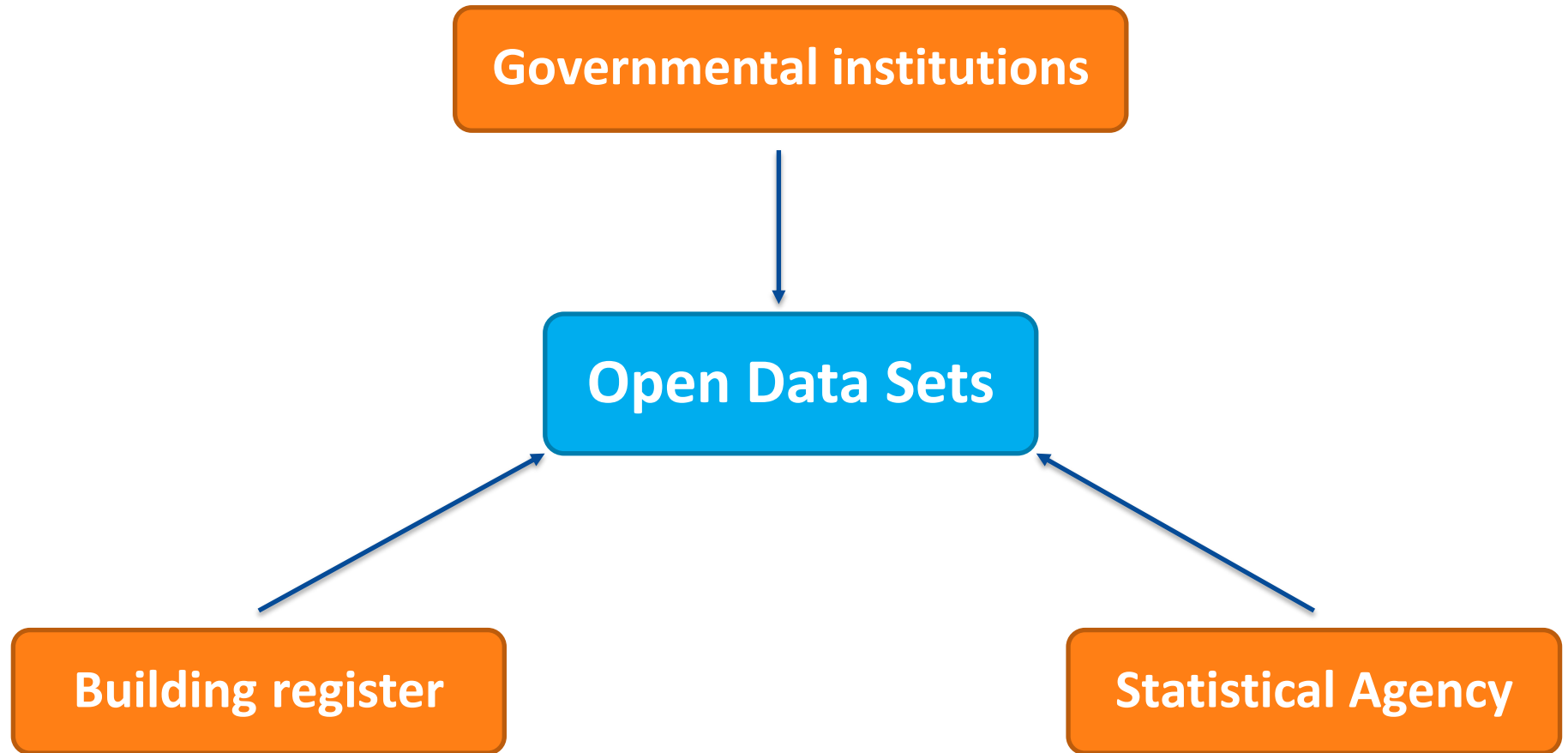
Risk analysis old fashion



Risk calculation new fashion



Sources



Proof of Concept

Dataset

Demographic datasets

Geographical dataset neighbourhoods

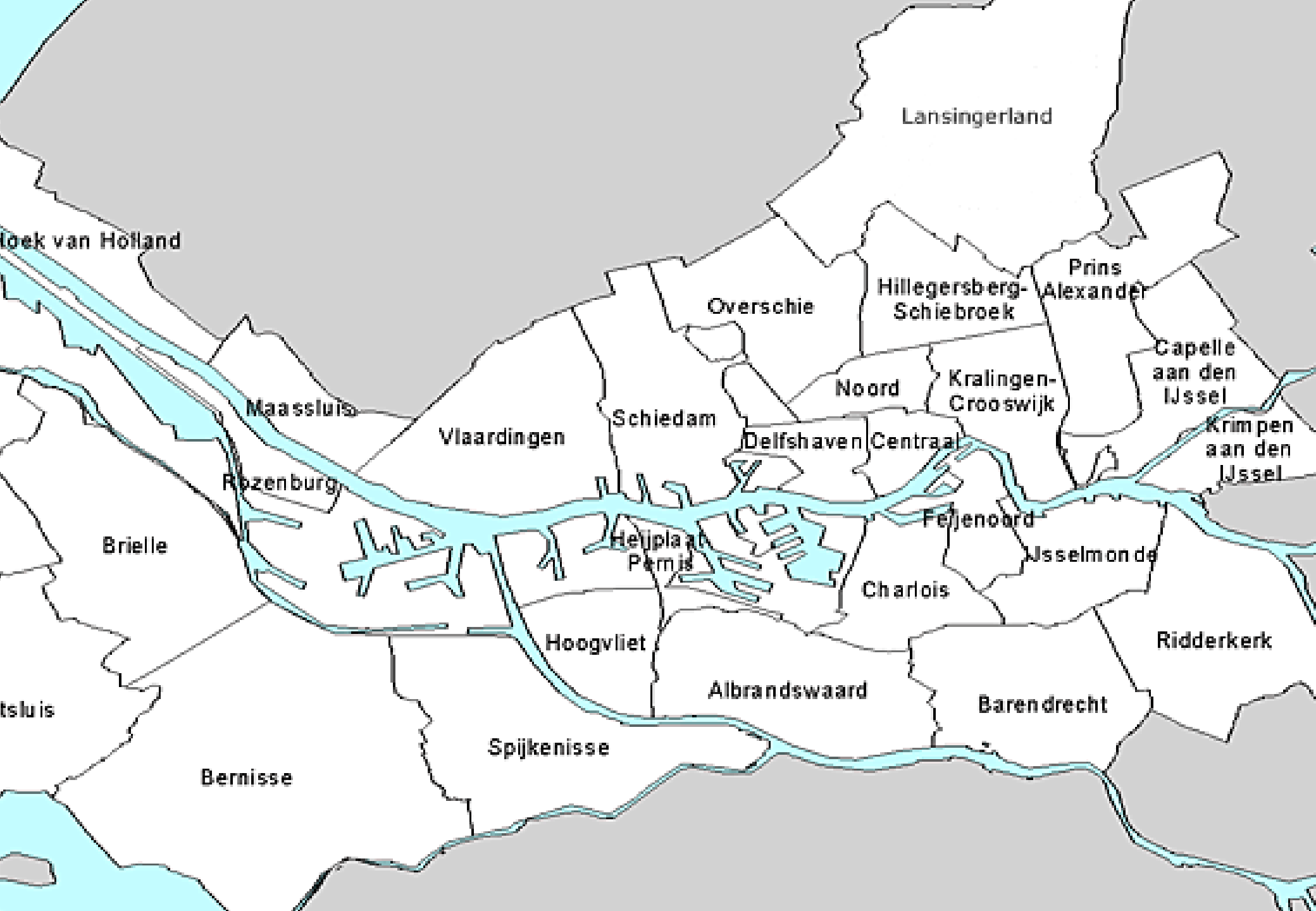
Measured Response Time, Fire department

Locations of all fire departments in the Netherlands

Building register

Proof of Concept

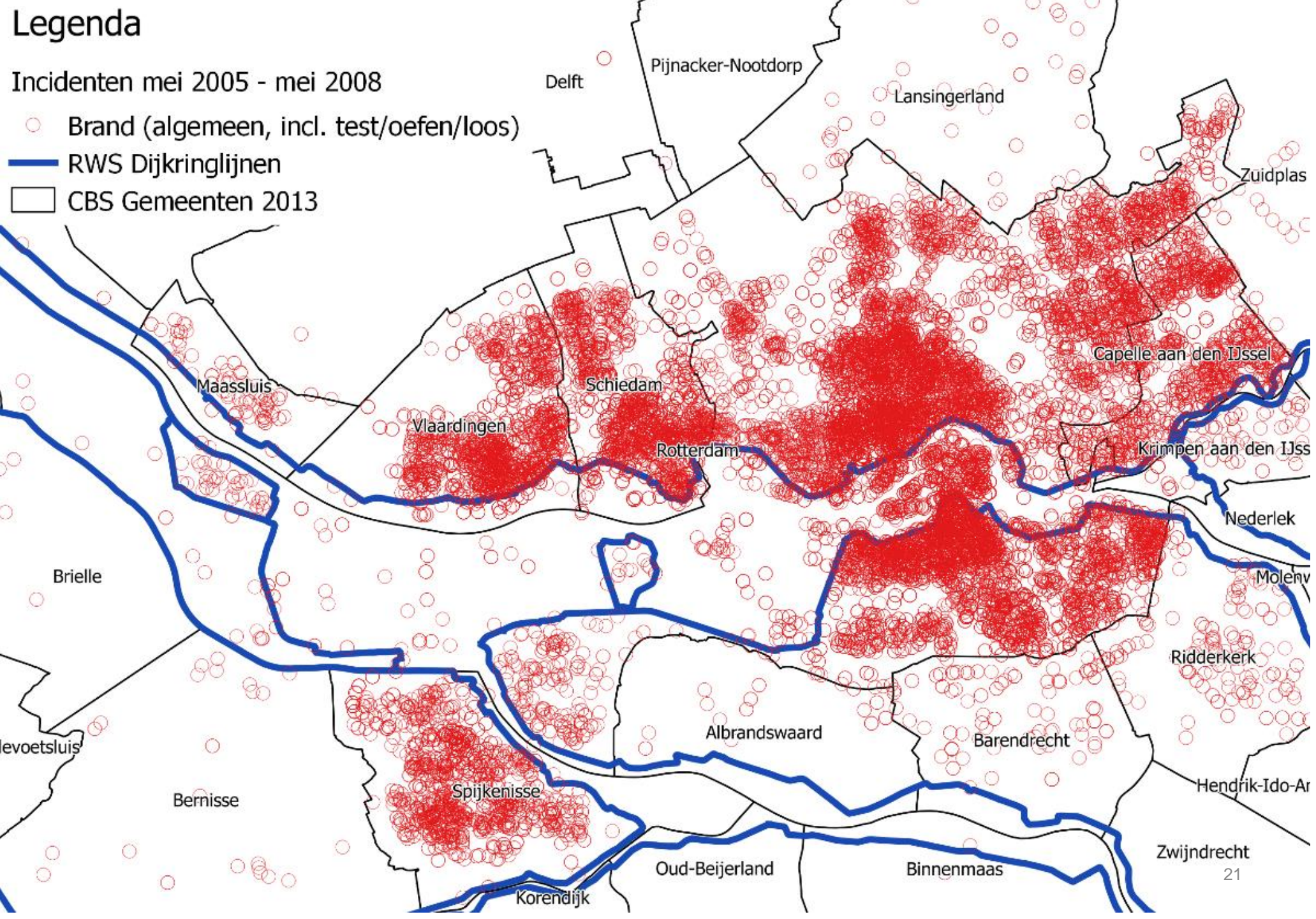
Factor	Risk (%)
Owner-occupied house	27,4% lower risk
Native main tenant	27% lower risk
Occupant head 65 or older	21,2% lower risk
Construction year 1991 or younger	15,8% lower risk
Western immigrant main tenant	15,7% lower risk
More people registered address	7,6% higher risk
0-11 year (s) in the house	10,6% higher risk
Single-person households	11,5% higher risk
Single storey apartment	24,8% higher risk
12-17 year (s) in the house	39,1% higher risk
One parent family	40% higher risk



Legenda

Incidenten mei 2005 - mei 2008

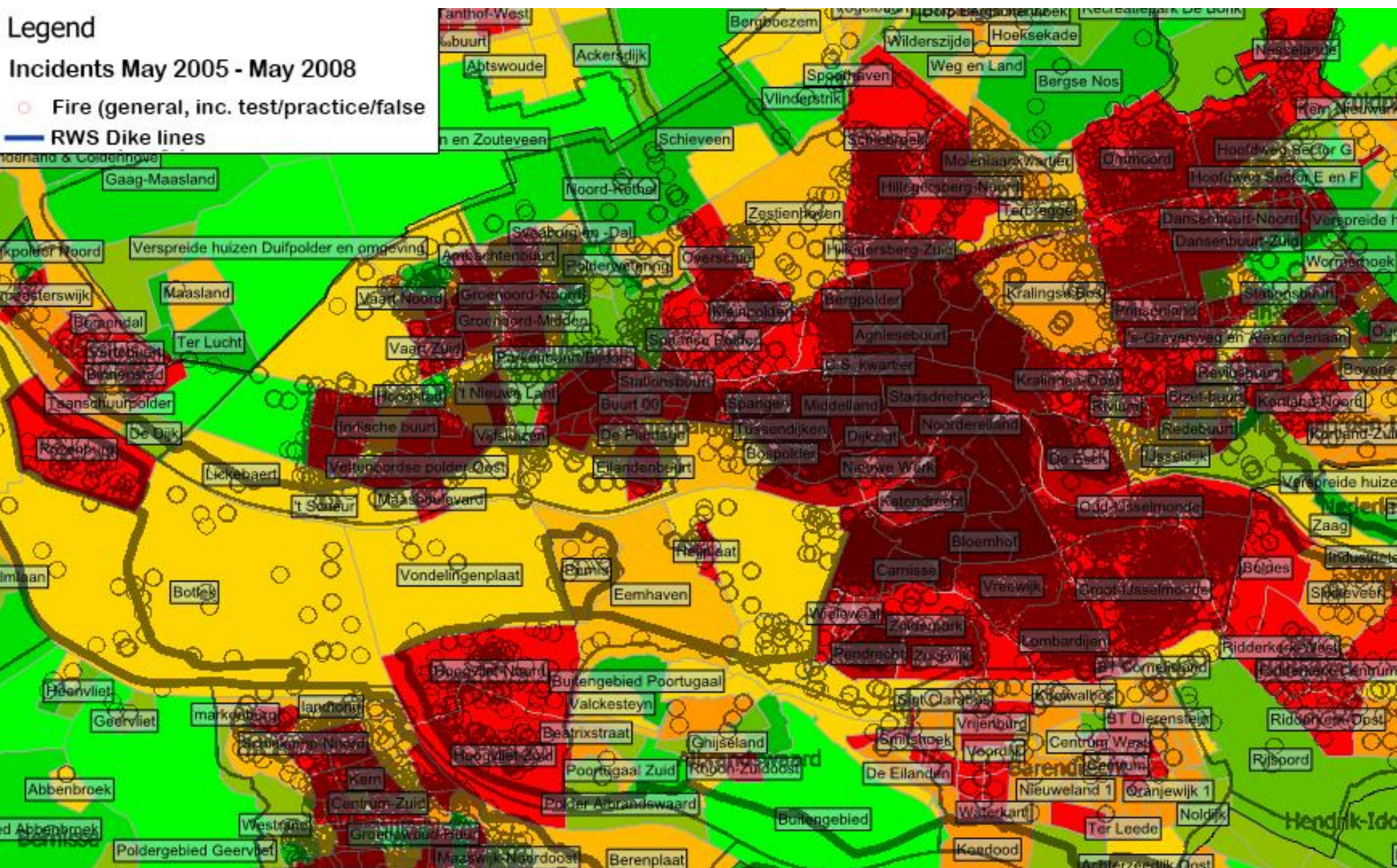
- Brand (algemeen, incl. test/oefen/loos)
- RWS Dijkkringlijnen
- CBS Gemeenten 2013



Legend

Incidents May 2005 - May 2008

- Fire (general, inc. test/practice/false)
- RWS Dike lines



The background of the slide features a series of concentric white circles on a solid blue field, creating a ripple effect that draws the eye toward the center.

Value

The background of the slide is a solid orange color. Overlaid on this background are several concentric white circles. The circles are centered on the slide and expand outwards from the center, creating a target-like or ripple effect. The text is positioned in the center of the innermost circle.

Moral Obligation

The background of the slide features a series of concentric white circles on a solid blue field, creating a target-like or ripple effect that draws the eye toward the center.

Challenges

The background of the slide is a solid green color. Overlaid on this background are several concentric white circles. The circles are centered on the slide and expand outwards from the center, creating a series of rings. The text 'Location Challenge' is centered within the innermost circle.

Location Challenge

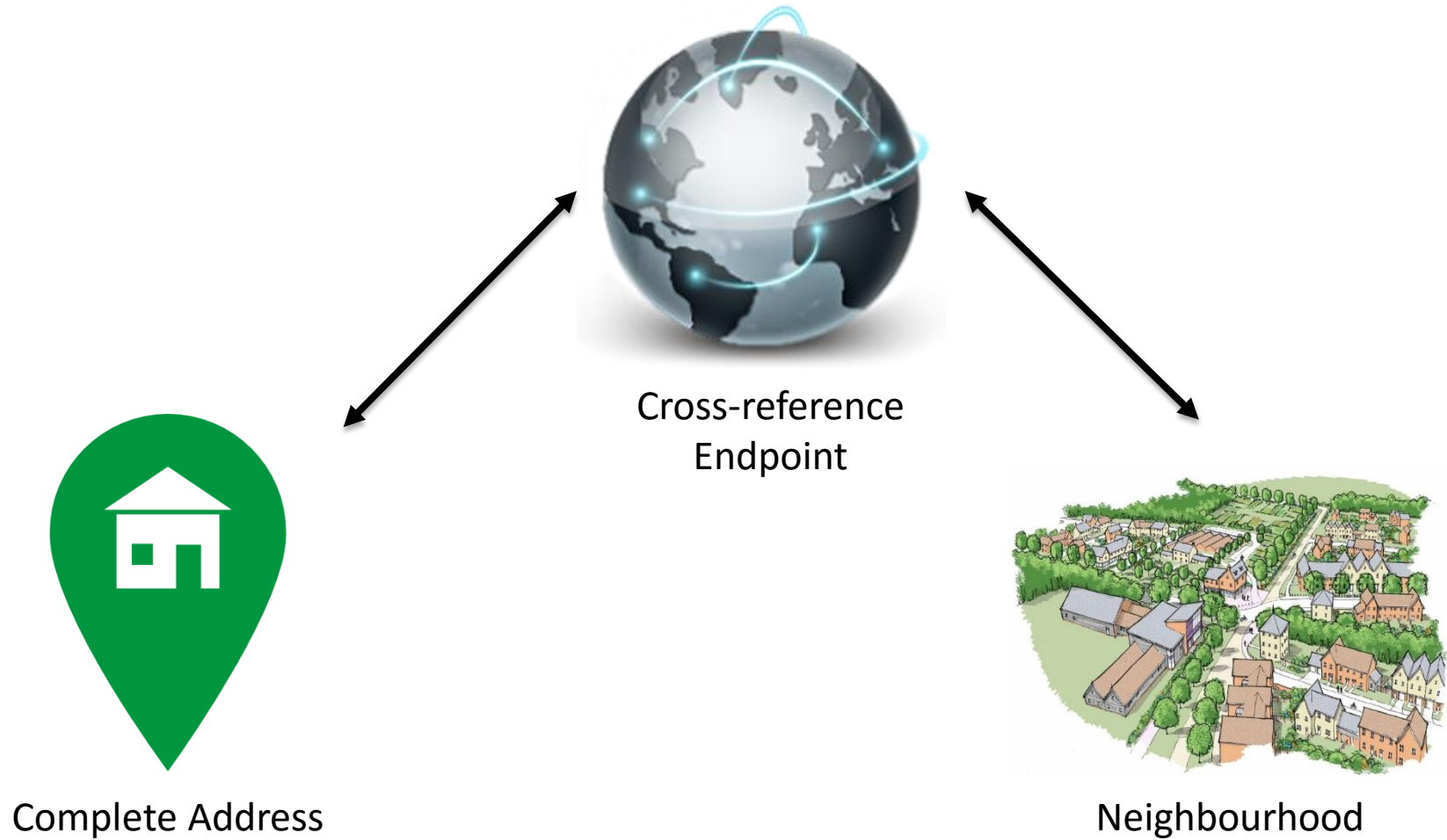
Location alignment

Local Government Level

Neighbourhood level

Address level

Cross-Reference endpoint



Proof of Concept to Product



**Self-service
platform**

**Experimenting
with data**

**Sharing
analytics**



RESC.Info Insight

Residential fire risk calculation based on open data with spatial components.

Nicky van Oorschot •  NETAGE.NL



@nickyvoorschot • #SharePSI